

Stop Master Pro 1.17 (User Manual)

Stop Master Pro | The Risk-to-Lot Execution Engine

Convert Risk into Precision: Instantly Turn Dollar Risk (\$) into Exact Lot Sizes. Instant Order Placement for Manual Traders.

Product Description

Stop Master Pro is a professional-grade execution tool designed for the discerning manual trader. It is not a "robot" that makes decisions; it is a precision instrument that empowers you to execute your trading plan with speed and accuracy.

You provide the Strategy. Stop Master Pro provides the Execution.

Experience electric execution speed. The moment a candle closes, the EA detects the direction and places a **Buy Stop** on **Bullish** closes or a **Sell Stop** on **Bearish** closes. It instantly locks in your entry before the market moves.

Key Features

- **Manual Trader Focused:** Designed for traders who make their own trading decisions.
- **Instant Risk Calculation:** Enter your desired risk in Dollars (\$), and the EA calculates the Lot Size.
- **Precise Order Placement:** Place Buy Stop and Sell Stop orders at the exact price levels you define.
- **Fast Execution:** Benefit from speedy order placement.
- **Universal Points Logic:** Works flawlessly on any asset class (Forex, Metals, Crypto) without manual adjustments.

User Manual & Input Guide

1. Execution Mode

- **Single Shot Mode: (Recommended):** The EA places orders for the current setup **once**. After the orders are placed, the EA pauses internal operations. To trade again, you must toggle the "**Algo Trading**" button **Off** and **On** to reset the system.
- **Continuous Mode:** The EA runs continuously. It will scan every new candle and place new pending orders automatically if the setup criteria are met, without waiting for a reset.

Important Note: If your internet disconnects or the Meta Trader terminal restarts, the "**Single Shot**" memory will reset. If you want to ensure the EA stays paused and does not place new orders after a restart, simply **change the Chart Timeframe** (e.g., switch from M5 to M15).

Smart Timeframe Logic: By default ('**Current**'), the EA automatically adapts to match your chart's timeframe for instant plug-and-play. However, if you manually select a specific timeframe in the settings (e.g., M5) but attach it to a different chart (e.g., H1), the **Safety Lock** will activate and stop trading to prevent errors.

2. Money Management (Risk Control)

- **Enable Auto Lot:**
 - **TRUE:** The EA calculates **Lot Size** based on your **Risk Limit Amount**.
 - **FALSE:** The EA uses the Fixed Lot Size you provide.
- **Risk Limit Amount (\$):** The exact amount of money you want to risk on this trade setup.
 - *Example:* Enter 50.0. If the trade hits Stop Loss, you lose \$50. The EA adjusts the **Lot Size** automatically.
- **Fixed Lot Size:** Used only if Enable Auto Lot is set to **FALSE**.

3. Order Parameters (Points Logic)

*Important: All distances are in **POINTS** for maximum precision.*

- **Buy Stop Offset from Candle High (Points):** The distance (in Points) *above* the previous candle's High to place the Buy Stop order.
- **Sell Stop Offset from Candle Low (Points):** The distance (in Points) *below* the previous candle's Low to place the Sell Stop order.
- **Stop Loss Offset from Candle High (Points):** The distance (in Points) *above* the entry price to set the Sell Stop Loss.

- **Stop Loss Offset from Candle Low (Points):** The distance (in Points) *below* the entry price to set the Buy Stop Loss.
- **Take Profit Multiplier (R:R):** The Risk-to-Reward ratio.
 - *Example:* A value of 2.0 means the Take Profit will be twice as far from the entry as the Stop Loss.

4. EA Settings

- **Timeframe:** The timeframe the EA uses to analyze the previous candle (e.g., M5).
 - **Magic Number:** A unique identifier for the EA's trades.
 - **Trade Comment:** A comment added to all orders.
 - **Timer Interval:** The frequency (in seconds) at which the EA checks for new candles. Lower values mean faster execution, but higher CPU usage.
 - **Retry Time Window:** If an order fails to place immediately, the EA will retry for this many seconds.
-

How to Use (Workflow)

- **Analyze:** Perform your manual analysis on the chart.
- **Setup:** Drag Stop Master Pro onto the chart and set your Risk (\$) and Price Offsets (Points).
- **Execute:** When the candle closes and you are ready to trade, turn **Algo Trading ON**.
- **Relax:** Stop Master Pro places the pending orders with the correct Lot Size.
- **Reset:** If using "Single Shot," toggle the **Algo Trading** button to reset the EA for the next opportunity.

Stop Master Pro 1.17

Common Inputs

Variable	Value	
Execution Mode	Single Shot (Trade Once, Wait for Algo Reset)	1
Enable Auto Lot (Risk Limit Based)	true	2
Risk Limit Amount (\$) (Auto Lot Enabled)	10.0	3
Fixed Lot Size (Auto Lot Disabled)	0.01	4
Buy Stop Offset from Candle High (Points)	85.0	5
Sell Stop Offset from Candle Low (Points)	85.0	6
Buy Stop Offset from Candle Low (Points)	50.0	7
Sell Stop Offset from Candle High (Points)	50.0	8
Take Profit Multiplier (R:R)	2.0	9
TimeFrame	current	10
Magic Number	78619	11
Order Comment	Trade Craft Mentor	12
Timer interval in seconds (Overridden internally for 20n	2	13
Retry window (seconds)	5	14

Variable	Value
Execution Mode	Single Shot (Trade Once, Wait for Algo Reset) ▾
	Continuous (Trade Every Candle)
	Single Shot (Trade Once, Wait for Algo Reset)

- Execution Mode:** Choose Single Shot to trade once and wait for a reset, or Continuous to trade every candle automatically.
- Enable Auto Lot:** Set to True to calculate lot size based on risk, or False to use a specific manual lot size.
- Risk Limit Amount (\$):** The exact amount of money (e.g., \$10) you are willing to lose on a single trade.
- Fixed Lot Size:** The manual volume (e.g., 0.01) the EA will use if Auto Lot is turned off.
- Buy Stop Offset from Candle High:** The distance (in Points) added to the candle High to set the Buy Entry price.
- Sell Stop Offset from Candle Low:** The distance (in Points) subtracted from the candle Low to set the Sell Entry price.
- Buy Stop Offset from Candle Low:** The distance (in Points) below the candle Low to set the Stop Loss for Buy trades.
- Sell Stop Offset from Candle High:** The distance (in Points) above the candle High to set the Stop Loss for Sell trades.
- Take Profit Multiplier (R:R):** Multiplies your Stop Loss distance to calculate the Take Profit (e.g., 2.0 = 1:2 Risk/Reward).
- TimeFrame:** Determines which timeframe candles to trade (keep as Current to match your open chart).
- Magic Number:** A unique ID number that allows the EA to identify and manage its own trades.
- Order Comment:** A custom text label attached to every trade for easy identification in your history.
- Timer interval in seconds:** Internal update speed (Note: This is technically overridden to 0.02s for electric response).
- Retry window (seconds):** The duration the EA will keep attempting to place an order if the price moves too fast.

Load

Cancel

OK

Cancel

Reset

Toolbox

Stop Master Pro 1.17

Common Inputs

Variable	Value
Execution Mode	Single Shot (Trade Once, Wait for Algo Reset)
Enable Auto Lot (Risk Limit Based)	true
Risk Limit Amount (\$) (Auto Lot Enabled)	100.0
Fixed Lot Size (Auto Lot Disabled)	0.01
Buy Stop Offset from Candle High (Points)	85.0
Sell Stop Offset from Candle Low (Points)	90.0
Stop Loss Offset from Candle High (Points)	85.0
Stop Loss Offset from Candle Low (Points)	270.0
Take Profit Multiplier (R:R)	2.0
Timeframe	5 Minutes
Magic Number	78619
Order Comment	Trade Craft Mentor
Timer interval in seconds (Overridden in...)	2
Retry window (seconds)	5

Load Save OK Cancel Reset

Drag to modify Profit: 192.00 USD Points: 1280

Close Candle's High-Low

2025.12.18 08:30
Open: 4333.50
High: 4336.08
Low: 4333.23
Close: 4335.98

Drag to modify Profit: -96.00 USD Points: -640

EURUSD,H1 XAUUSD,M5 US100,M1 XTIUSD,M1 BTCUSD,M1 USDJPY,M1

Symbol	Ticket	Time	Type	Volume	Price	S / L	T / P	Price	Profit
xauusd	253033524	2025.12.18 08:35:00	buy stop	0.15 / 0	4336.93	4330.53 x	4349.73 x	4334.14	placed x

Live Execution Analysis: Precision Meets Protection

Stop Master Pro executing a flawless trade on XAUUSD (Gold). Here is exactly how the logic works in real-time.

- 1. Electric Speed Execution**
Notice the Order Time: **2025.12.18 08:35:00**.
The moment the M5 candle closed, the EA detected the setup and placed the Pending Order instantaneously. No lag, no hesitation.
- 2. Precision Entry & Exit Calculation**
 - **Entry:** Candle High (**4336.08**) + 85 Points Offset = **4336.93**.
 - **Stop Loss:** Candle Low (**4333.23**) - 270 Points Offset = **4330.53**.
 - **Take Profit:** With an Input of **R:R 2.0**, the EA automatically calculated a Target **1280 Points** away, securing a potential profit of **\$192.00** (Double the risk).
- 3. Intelligent Money Management (The Core Feature)**
The user set a **Risk Limit of \$100.00**.
 - **The Math:** Based on the Stop Loss distance (640 points), the EA automatically calculated a **Lot Size of 0.15**.
 - **The Result:** A 0.15 Lot trade carries a total risk of **\$96.00**.
 - **Why?** The EA is programmed to find the maximum possible lot size that **never exceeds** your limit. It protects your capital by staying safely under the \$100 cap.

Special Note: In this example, **Enable Auto Lot** was set to **True**. This is why the EA calculated the 0.15 Lot size dynamically based on risk. If this setting were False, the EA would have simply used the Fixed Lot Size (e.g., 0.01).

Stop Master Pro 1.17

Common Inputs

Variable	Value
Execution Mode	Single Shot (Trade Once, Wait for Algo Reset)
Enable Auto Lot (Risk Limit Based)	true
1/2 Risk Limit Amount (\$) (Auto Lot Enabled)	10.0
1/2 Fixed Lot Size (Auto Lot Disabled)	0.01
1/2 Buy Stop Offset from Candle High (Points)	85.0
1/2 Sell Stop Offset from Candle Low (Points)	50.0
1/2 Stop Loss Offset from Candle High (Points)	85.0
1/2 Stop Loss Offset from Candle Low (Points)	50.0
1/2 Take Profit Multiplier (R:R)	2.0
Timeframe	current
01 Magic Number	78619
ab Order Comment	Trade Craft Mentor
01 Timer interval in seconds (Overridden internally for 20m...	2
01 Retry window (seconds)	5

Smart Timeframe Logic: By default ('Current'), the EA automatically adapts to match your chart's timeframe for instant plug-and-play. However, if you manually select a specific timeframe in the settings (e.g., M5) but attach it to a different chart (e.g., H1), the **Safety Lock** will activate and stop trading to prevent errors.

Chart Timeframe WARNING!

CRITICAL WARNING: Chart timeframe does not match EA Input! Trading disabled for safety.

If this **CRITICAL WARNING** appears in the Expert Tab, the Safety Lock has immediately disabled trading because your Chart Timeframe does not match the EA Input.

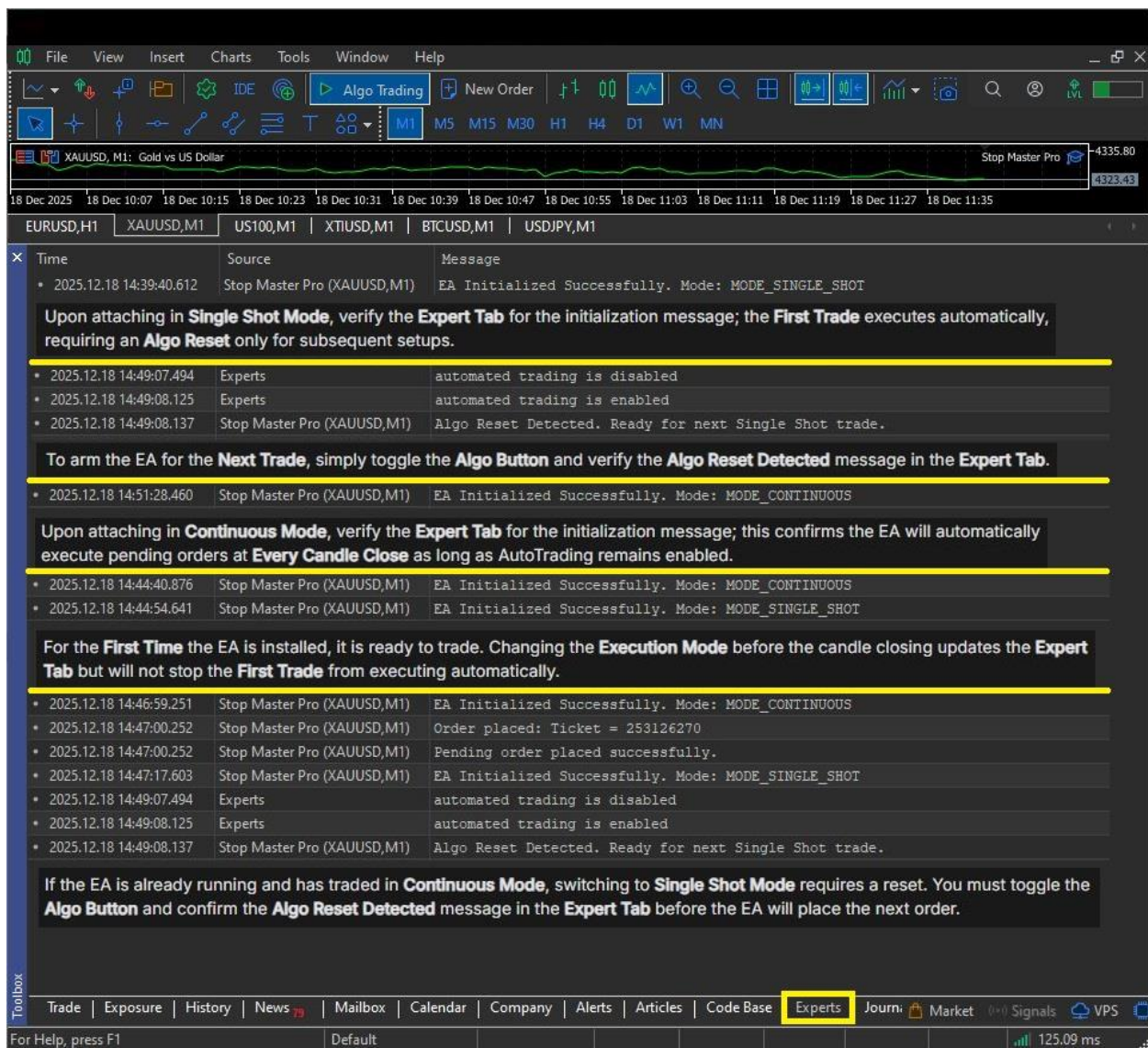
Load

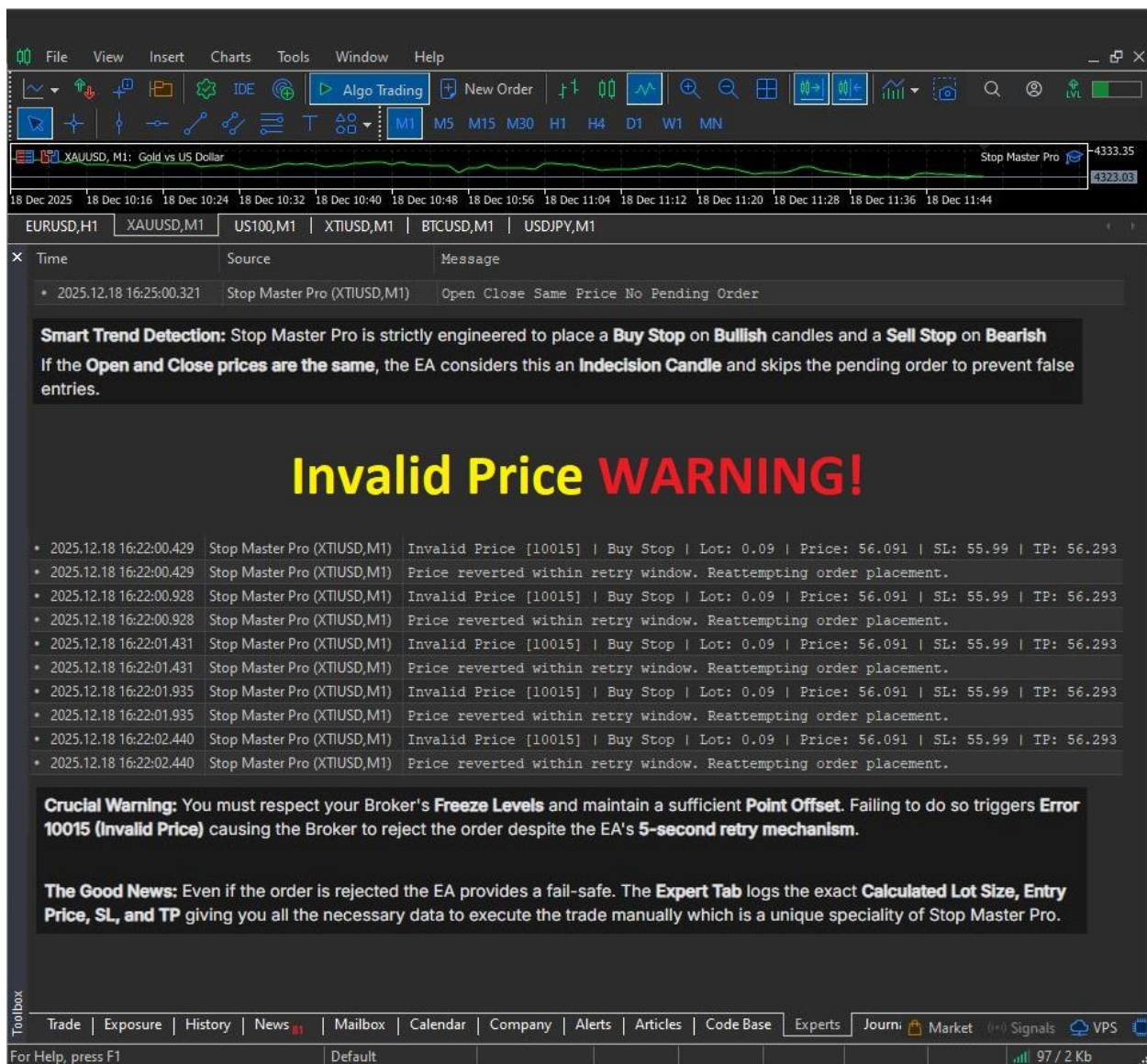
Save

OK

Cancel

Reset





FileViewInsertChartsToolsWindowHelp

Algo TradingNew Order

M1M5M15M30H1H4D1W1MN

Stop Master Pro 1.17

CommonInputs

Stop Master Pro 1.17

Wasim Akram | Founder of Trade Craft Mentor

EA Designed for Manual Traders to Calculate Lot Size and Place Pending Orders Using User-Set Price Levels and Fixed Risk Parameters.

☐ Allow Algo Trading

OKCancelReset

Stop Master Pro

Stop Master Pro Installed Without Checked Allow Algo Trading.

Do Not MODIFY Input Values Before Checking the Box and Pressing "OK".

EURUSD,H1XAUUSD,M1US100,M1XTIUSD,M1BTCUSD,M1USDJPY,M1

Symbol	Ticket	Time	Type	Volume	Price	S/L	T/P	Price	Profit
--------	--------	------	------	--------	-------	-----	-----	-------	--------

Since You Understand Offsets & Broker Freeze Levels

Controlled Execution & Recovery allows you to deliberately wait for a candle close before pulling the trigger, or recover a trade if you simply forgot to enable permissions. By keeping the global **Algo Trading** button ON but leaving **Allow Algo Trading** unchecked in the **Common Tab**, the EA calculates the setup at the candle close but waits on standby. To execute the trade mid-candle, simply check the box and click **OK**.

Upon activation, the EA immediately validates the current price against your **Offset Points** and **Broker Freeze Levels**. If the market conditions are valid, the pending order is placed instantly. If the price has moved too far and triggers an **Invalid Price** alert, the EA still provides immense value by logging the exact **Calculated Lot Size, Entry Price, SL, and TP** in the **Expert Tab**, giving you all the data needed to place the trade manually.

For safety, this instant trigger only functions if you do not modify any **Input Values** while enabling the checkbox. Once the trade is executed, specifically in **Single Shot Mode**, it is mandatory to toggle the main **Algo Button** to reset the logic. Always verify the **Algo Reset Detected** message to ensure the EA is re-armed and ready for the next setup.

TradeExposureHistoryNews97MailboxCalendarCompanyAlertsArticlesCode BaseExpertsJournalMarketSignalsVPSTester

For Help, press F1Default123.79 ms